

PHILIPS

Professional Display Solutions

2020



Range **discovery guide**

Signage solutions and Professional TV

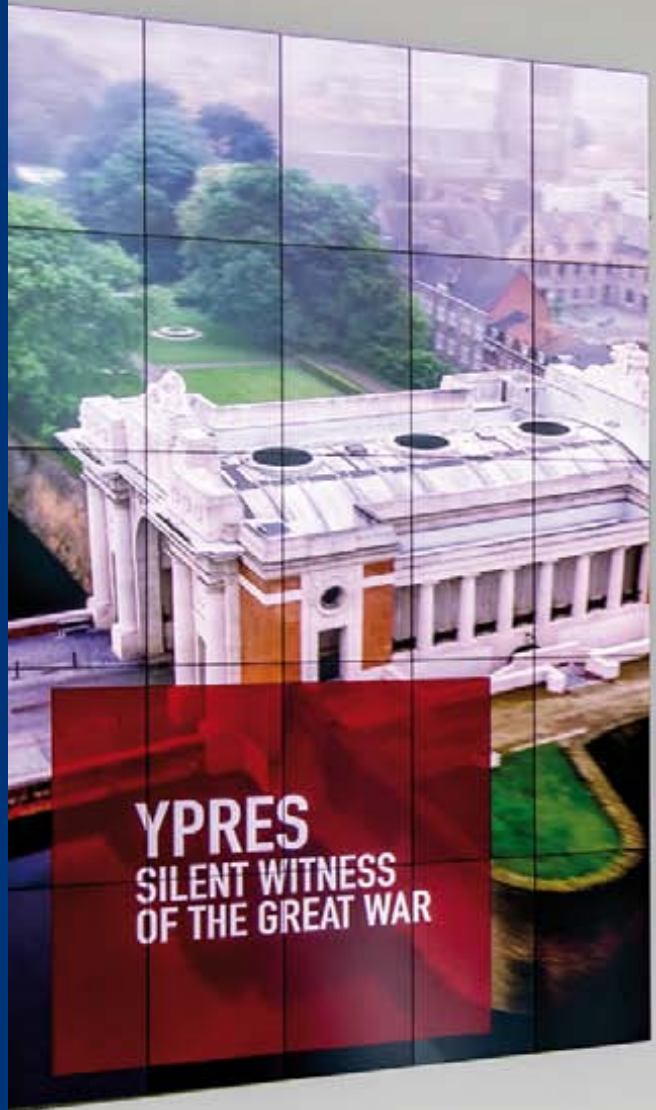


Tailored tech solutions **for better business**

Better
with **Philips** Professional
Display Solutions

Power and versatility is only
the beginning. Every innovation
from Philips Professional Display
Solutions is designed for maximum
impact.

Over 40 years of one on one
industry experience with small
business and global enterprises has
resulted in breakthrough technology
development ranging from ultra-
clear high brightness smart signage
to limitless bezel-free LED wall
displays.



Signage collection

Make an impact with the impressive collection of Signage solutions.

Super high brightness and ultra-clear resolution brings your content to life for flawless audience engagement and better results.

Built with versatility in mind, each display comes packed with features that can be easily adapted for your usage needs.

Pro TV collection

Power up your business with advanced connectivity, a plethora of smart features and ultra-high resolution picture quality.

The Professional display collection has been purpose built to meet the evolving demands of each business sector. Cutting-edge innovations and superior design come together to help you achieve your goals.



Reach a new standard
in digital communication
Philips Professional Display
Solutions proudly present the 2020
range.

See the difference

Android	4
CMND	5
ARC	6

Meet the products

B-Line	8
Q-Line	10
D-Line	12
C-Line	14
T-Line	16
P-Line	18
H-Line	20
X-Line	22
LED	24
MediaSuite	26
PrimeSuite	28
EasySuite	30
Studio	32
Bedside TV	34

Android™

Infinite possibilities for better business

Engage, inform and create with ease. When you choose a Philips professional display powered by Android, you'll have access to millions of apps from the Google Play store.

You'll also experience more ways to connect your custom software for a truly unique experience.

Do more with Android

Give your clients more ways to enjoy their time in front of your screens.

Make a positive impression as a tech-forward company with tailored experiences.

Enjoy better connectivity with your existing systems without additional costs.

Open-source design allows you to create custom apps for any purpose.

Secure Google updates keep your Android apps optimised and protected.



CMND

Take command of your content

Optimise your on-screen content with the Philips exclusive CMND platform.

Philips professional displays that feature CMND put you in total control with powerful content creation, advanced system connectivity and pro-grade deployment through an easy to use interface.

Do more with CMND

Update your entire fleet of screens, selected sectors or single units with CMND.

CMND & Create provides easy-to-use tools and templates to design and publish custom content.

Available on Signage & Professional TV models

CMND & Control allows you to manage inputs and monitor display status over a local connection.

Available on Signage & Professional TV models

CMND & Check-in streamlines processes and adds a special touch with personal communications.

Available on Professional TV models

CMND & Deploy lets you install, launch and update your apps quickly and remotely.

Available on Signage models



ARC

Visualize it in your space

See how your custom Philips Professional Display Solutions set-up will look with the Augmented Reality Configurator.

The user-friendly ARC app works on any mobile device to give an accurate visualization of standalone signage screens and videowall installations.

Do more with ARC

Accurately measures wall space and simulates positioning from various angles.

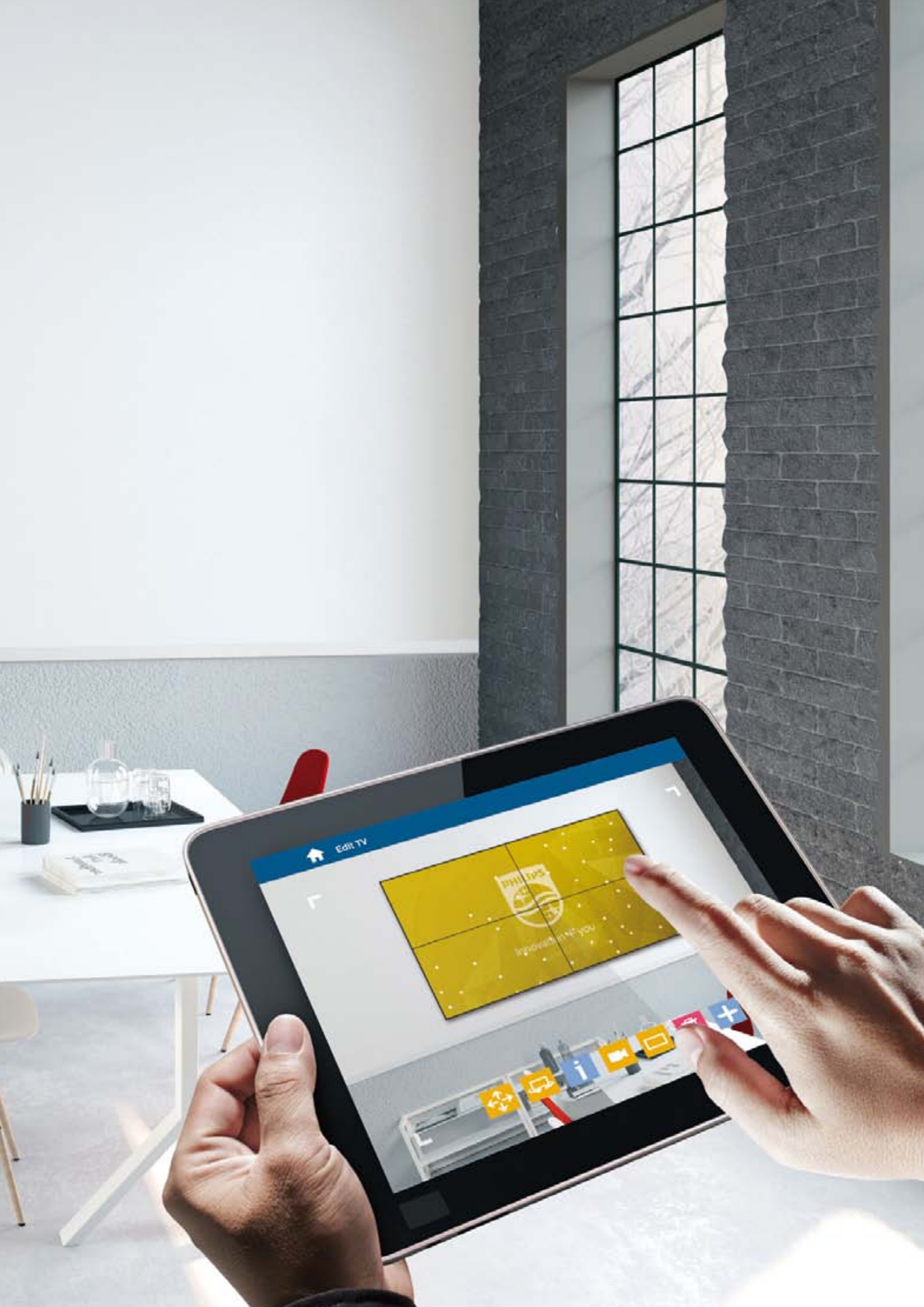
Realistic representations of individual or multiple screens.

Easily switch between models and sizes to get the perfect fit for your space.

User-friendly interface that works on any connected mobile device with a camera.

Available for download from the Google Play store and App store.





B-Line

Professional productivity

Boost productivity and results.

The new Philips B-Line display is Crestron Connected certified, and compatible with Extron as well as Neets systems for seamless control. Schedule content and easily stream from any external device with Chromecast built-in and HDMI hotplug detection.

75"

70"

58"

50"

Features may not be available on all models



Corporate

Designed for results in demanding environments, the B-Line range delivers the ultimate in wireless and wired connectivity for quick, hassle-free presentation and content sharing. Extra tools and functionality can be added easily through the Google Play Store thanks to the Android OS built-in.

Food and Beverage

Schedule content and promotions based on time of day and special events to maximise results within your establishment. CMND & Control allows you to perform vital functions like controlling settings, updating software, and monitoring display status.



Features

 Powered by **Android™**

 **4K ULTRAHD**

HDMI Hotplug detection

 **CRESTRON**
connected

Extron compatible

Neets compatible

 **CMND**
Create | Control

 **Google Play**

 **SmartInfo**

 **AppControl**

Scheduler

Auto ON/OFF

Q-Line

Versatile signage

Ready for anything, the Q-Line is easy to set-up and available in both FHD and 4K UHD for powerful engagement. These displays require no additional hardware and can be configured for almost any function.

86"	75"	65"	55"
49"	48"	43"	32"

Features may not be available on all models

Corporate

Easily connect and share content for ultra-efficient meetings and presentations. Built-in Android* gives you access to more devices and apps, whilst CMND allows for updateable internal communications in an instant.



Public venues

Inform and engage visitors in public spaces. With a range of size and resolution options, the Q-Line is perfect for mixing and matching based on usage requirements whilst maintaining design consistency throughout the space.

Retail

Optimise any retail space for a better shopping experience. Easily create and control promotional content across single or multiple displays with CMND, and keep running costs down with SmartPower.

Food and beverage

Clearly display menus, update item availability, pricing, and promotions with ease using CMND. Integrated SmartPlayer and an internal MemoryCache allow for local content to be scheduled and pushed as needed.

Entertainment

Keep patrons engaged with vibrant content in up to 4K Ultra HD and impressive sizes that reach up to 86-inches. CMND allows for quick content updates across single or multiple screens and internal MemoryCache allows for local source content.

Education

Bring lessons to life with up to 4K Ultra HD resolution, and engage students with better connectivity, and open source apps through built-in Android*. CMND allows for custom content to be created and displayed with ease.

*Built-in Android available on selected models



Features

 Powered by **Android™**

 **CMND**
Create | Control | Deploy

 **OPSInsert**

 **4K ULTRAHD**

 **Clinical D-Image**

 **SmartPlayer**

 **SmartPower**

 **SmartBrowser**

 **MemoryCache**

D-Line

Bigger impact

Performance meets versatility in the D-Line. Ranging up to 98-inches in size, this 24/7 D-Line is the perfect choice for content that needs to make a powerful impact in both landscape and portrait orientation. Built-in Android* provides an endless amount of possibilities.

98"	86"	75"	65"
55"	49"	43"	32"

Features may not be available on all models

Entertainment

Wow patrons with a screen size up to 98-inches. CMND allows for quick content updates across single or multiple displays, whilst internal MemoryCache and FailOver ensure that content is always running.



Public venues

Inform and engage visitors in public spaces. The D-Line features an integrated system to communicate with devices over the same network connectivity. FailOver ensures that backup content is played if the primary source experiences an outage.

Retail

Optimise any retail space for a better shopping experience. Easily create and control promotional content across single or multiple displays with CMND, and ensure content is always playing in case of primary source outages with FailOver.

Corporate

Easily connect and share content for ultra-efficient meetings and presentations. Built-in Android and SmartBrowser provide access to more apps, media content and devices, whilst CMND allows for updateable internal communications in an instant.

Food and beverage

Easily display menus, update item availability, pricing, and promotions with CMND. Integrated SmartPlayer and internal MemoryCache allow for local content scheduling, whilst FailOver ensures backup content is always available.

Transportation

Instantly update arrivals, departures and important announcements with ease using CMND. Built-in Android allows for live information and custom software integration from apps, whilst FailOver displays backup transport information in case of a primary source outage. All this with 24/7 operation.

*Built-in Android available on selected models



Features

 Powered by **Android™**

 **CMND**
Create | Control | Deploy

 **OPSInsert**

 **MemoryCache**

 **SmartInsert**

 **SmartPlayer**

 **SmartBrowser**

 **FailOver**

C-Line

Interactive meeting display

Maximise engagement and inspire collaboration with an interactive Philips C-Line display. Featuring an edge-to-edge glass and flush design, these Windows powered displays are made to withstand heavy daily usage and feature up to 10 touchpoints.

86"

75"

65"

55"

Features may not be available on all models



Corporate

Purpose built for corporate environments, the C-Line range combines versatile connectivity with maximum efficiency.

A tough multi-touch display allows for interactive collaboration, whilst white board mode makes agile brainstorm sessions better than ever.

Next generation HID capacitive touch with USB Plug & Play makes it fast and easy to stream content from external devices, and built-in video conferencing means a cleaner set-up.



Features



HID Capacitive Touch
with USB Plug & Play



T-Line

Interactive classroom display

Maximise engagement and inspire collaboration with an interactive Philips T-Line display. Featuring an anti-glare toughened glass, these Android powered displays are made to withstand heavy daily usage and feature up to 20 touchpoints.

86"	75"	65"	55"
43"	24"	10"	

Features may not be available on all models



Retail

Revolutionise your shopping experience by bringing the digital world into the store. Interactive touch-functionality can be used for product selection, wayfinding, and promotional experiences.

Public venues

Inform and engage visitors in public spaces. Multi-touch interactivity makes the T-Line perfect for wayfinding. FailOver ensures that backup content is displayed if the primary source experiences an outage.

Hospitality

Multi-touch interactivity keeps guests engaged and informed in any setting. Built-in Android allows for apps and custom connectivity, with up to four inputs being displayed simultaneously through QuadViewer.

Food and beverage

Streamline customer orders with touch-screen functionality linked to your POS system. CMND allows for menus and promotional content to be displayed on the same screen, whilst FailOver ensures backup content is always available.

Education

Bring lessons to life and truly engage students with an interactive touch-screen display and new whiteboard mode for collaborative experiences.

Built-in Android allows for learning apps and games, whilst CMND allows for custom content to be created and displayed with ease.



Features

 **Powered by Android™**

 **CMND**
Create | Control | Deploy

 **Plug & Play Multi-Touch**

HID Infrared technology
with USB Plug & Play

 **WhiteboardMode**

 **Wireless screensharing**

 **MemoryCache**

 **FailOver**

 **SmartInsert**

P-Line

Robust performance

Outperform challenging environments. Built tough with heavy-duty components, the P-Line is designed for 24/7 operation, and features high-brightness output. A perfect choice for kitchen set-ups to engine rooms.

55"

49"

42"

Features may not be available on all models

Food and beverage

Easily display menus, update item availability, pricing, and promotions with CMND. Integrated SmartPlayer and internal Memory Cache allow for local content scheduling, whilst FailOver ensures backup content is always available.



Entertainment

Brighten any space and keep patrons engaged. CMND allows for quick content updates across single or multiple screens, whilst internal MemoryCache and Fail Over ensure content is always running.

Transportation

Instantly update arrivals, departures and important announcements with ease using CMND. Built-in Android allows for live information and custom software integration from apps, whilst FailOver displays backup transport information in case of a primary source outage. All this with 24/7 operation.



Features

 Powered by **Android™**

 **CMND**
Create | Control | Deploy

 **OPSInsert**

 **FailOver**

 **SmartPlayer**

 **SmartBrowser**

 **SmartInsert**

 **MemoryCache**

H-Line

Ultimate visibility

Stand out and make an impact in any environment. The ultra-high brightness of the H-Line series ensures that content cuts through the crowd and receives the recognition it deserves. Robust components make this display ideal for 24/7 operation.

75"

55"

Features may not be available on all models

Retail

Stand out from the crowd with 3000 cd/m² ultra-high brightness to attract more customers. Easily create and control promotional content across single or multiple displays with CMND, and keep running costs down with SmartPower.



Public venues

Stay visible day and night with super-clear UHD resolution. CMND allows for content creation and management across single or multiple displays. FailOver ensures that backup content is displayed if the primary source experiences an outage.

Transportation

Ensure that schedules are visible in any condition with 3000 cd/m2 ultra-high brightness. Instantly update arrivals, departures and important announcements with ease using CMND. FailOver displays backup transport information in case of a primary source outage.



Features

 **HighBright**

 **CMND**
Create | Control

 **Android™ by OPSModule**

 **FailOver**

 **SmartPlayer**

 **SmartBrowser**

 **SmartInsert**

 **SmartPower**

X-Line

Versatile videowall

Command attention with a Philips X-Line Videowall display.

An ultra-narrow bezel allows for near seamless linking for a display of any size, whilst Advanced ColourCalibration ensures a clear image in any lighting condition.

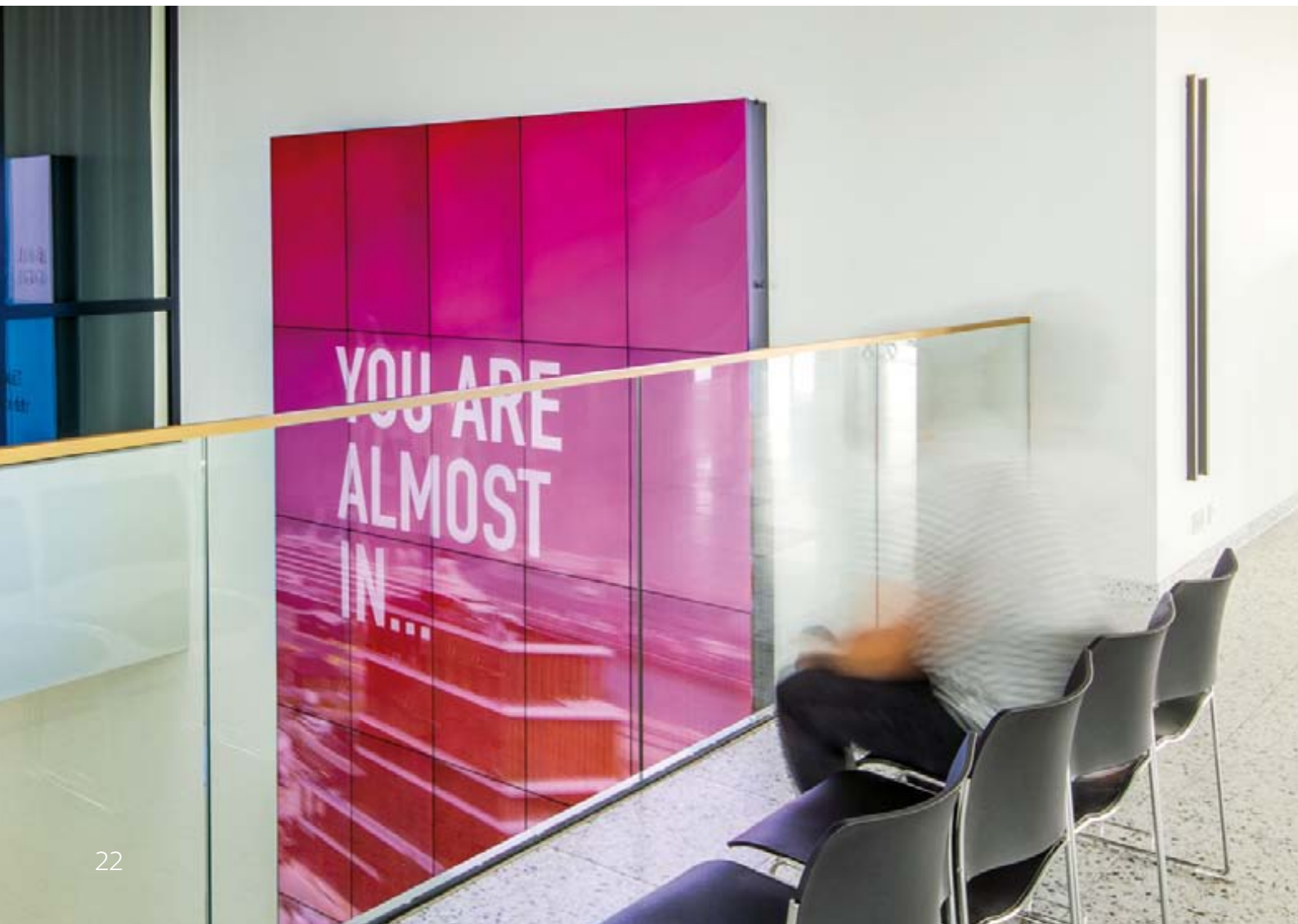
55"

49"

Features may not be available on all models

Public venues

Designed for 24/7 operation, this Videowall display is ideal for public spaces including points of interest, stadiums, and anywhere else that requires moving content. FailOver ensures that backup content is available in case of a primary source outage.



Retail

Make an impact with a jaw-dropping Videowall display. Easily create and control promotional content with CMND, keep running costs down with SmartPower, and ensure content is always displayed with FailOver.

Corporate

Take presentations and corporate branding to the next level. OPS Insert allows for a direct integration of a full-power PC or Android-powered CRD50 module, whilst CMND allows for updateable internal communications in an instant.

Healthcare

Modernise any healthcare setting with a vibrant Videowall. CMND allows for content integration to display patient queuing information, and health updates. SmartPower keeps running costs down.

Transportation

Ensure maximum visibility for transport scheduling and announcements. CMND allows for easy content updates, whilst FailOver displays backup transport information in case of a primary source outage.

Entertainment

Increase performance visibility with a giant Videowall display that gives every patron a front row view. Advanced ColourCalibration ensure a super clear picture, whilst SmartPower keeps running costs down.



Features

 **UltraNarrow**
Bezel

Direct **LED** IPS

 **4K ULTRAHD**
Tiling

 **CMND**
Create | Control

 **FailOver**

 **Android™** by
OPSModule

 Advanced
ColourCalibration

 **SmartPower**

 **OPSInsert**

LED

Beyond imagination

Unleash the ultimate visual experience with an LED Videowall display. An innovative bezel-free design allows for an unprecedented set-up of any configuration – fuelling creativity in every shape or size. UltraHigh Refresh Rate gives content a lifelike effect to maximise impact.

44"

27"

Also available in different kits

Features may not be available on all models



Retail

Transform any retail space into the ultimate shopping experience by configuring a custom shaped Videowall. Have each message stand out from the competition with high-brightness LED screens designed to turn passers-by into shoppers.

Corporate

Create a powerful statement in any lobby, boardroom, meetings room, office and common area. The bezel-free design puts the focus on presentations and corporate branding content to keep staff and visitors engaged, in the moment, and inspired.

Public venues

Inform and engage visitors in public spaces. High-brightness LED ensures that content is always visible in both indoor and outdoor environments. Utilize the bezel-free design to create a clean look, or fit into a custom installation for protective or branding purposes.

Transportation

Ensure maximum visibility for transport scheduling and announcements. The bezel-free design can be used to create a custom display that fills any space, or can easily be fitted into a protective housing for safety.

Hospitality

Keep guests and customers entertained with the beautiful picture quality of LED. Ready for custom-integration, create a vibrant setting that's full of color in any environment including hotel rooms, restaurants, bars, ballrooms, and other places where image is paramount.



Features

 **FinePixelPitch**

 **ZeroBezel**

 **Front Access Service**

 **UltraHighRefreshRate**

 **EasyInstall**

MediaSuite

Smarter connectivity

Designed for tomorrow's content, MediaSuite features advanced connectivity, versatile configuration settings and smarter features such as Google Assistant. Integrated Netflix and Chromecast built-in make streaming fast and easy, whilst Android and Google Play Store unleash infinite possibilities.

65"	55"	50"	43"
32"			

Features may not be available on all models

Hospitality

Make your guests feel at home with Chromecast built-in for instant streaming from their personal devices, IPTV for extra channels, access to the Google Play store and now with integrated Netflix and direct access from the remote control. Available in Full HD and 4K Ultra HD.



Corporate

Improve business productivity with seamless connectivity from both Android, Windows and Apple devices. Google Assistant makes it faster to get the info you need during presentations, whilst Smart Info and Scheduler ensures your corporate branding and comms are displayed when screens are not in use.

Entertainment

Engage patrons, promote new offers, and achieve your business targets with effortless custom content developed in-house using CMND. Paired with advanced connectivity, the possibilities are endless.



Features



Powered by **Android™**



CMND
Create | Control | Check-In



Chromecast™
built-in



Extended
Lifetime



Google Play



Analytics
on-board

NETFLIX



Scheduler

PrimeSuite

Flexible control

A new release designed for hospitality and healthcare settings, the PrimeSuite series provides a perfect balance between features and price. Solid LAN connectivity, IPTV and CMND make this mid-size display ideal for guest entertainment and corporate branding..

50"

43"

32"

28"

Features may not be available on all models

Hospitality

Customisable on-screen branding creates a premium look, whilst a wired LAN input ensures a cost effective online connection for IPTV and YouTube. CMND allows for fast promotional updates and personal guest information.



Healthcare

Perfect for common areas, the customisable dashboard in the PrimeSuite series easily integrates into existing systems for patient information, queue management, and health notifications.

IPTV also enables better entertainment during patient waiting times.

UI branding

Your Philips Professional TV offers a very clear, easy-to-navigate user interface (UI), which you can customize with your own branding.

Easily add your logo and colors to the search bar to increase the visibility of your brand.



Features

 **CMND**
Create | Control

 **YouTube**

 **IPTVChannels**

 **IntegratedSystem**

 **MyChoice**

 **Serial Xpress
Protocol**

EasySuite

Take control

Show more with the economic EasySuite series. This professional TV features an intuitive CMND platform, which makes it simple to deploy and manage connected displays. Its on-screen welcome page is easy to program for a premium look.

50"

43"

32"

24"

Features may not be available on all models



Hospitality

Set a premium impression with a customisable welcome page, boost revenue with the MyChoice* pay-to-view solution, and quickly configure additional TVs with USB cloning. The EasySuite series keeps operational costs down with low power consumption, whilst CMND & Control provides remote management of displays without guest disturbance.

*MyChoice

Offer pay-to-view content in any situation from a complete pay-to-access-all-channels model to selected premium content.

MyChoice is an integrated solution that allows viewers to access pay-per-view channels via a code or a card.



Features



CMND
Control



MyChoice



USB Cloning



WelcomePage



PrisonMode



MultiRemote

Studio

Versatile simplicity

A marvel in design, the Studio series has the versatility for almost any industry usage yet functions like an industry specific display. Its new sleek design now boasts a built-in satellite tuner and is available in HD, FHD, and UHD.

75"	65"	55"	49"
43"	32"	24"	

Features may not be available on all models

Hospitality

Delight guests with a personalised welcome page, and provide them with the perfect mix of channels through satellite, digital and analogue inputs. Low-power consumption helps keep running costs down.



Public venues

Available in a range of size and resolution options, and featuring an Advanced Security Mode that switches off certain settings for use in niche market applications.

Entertainment

A plethora of sizes ranging up to 75 inches will keep patrons engaged in any setting. Vibrant resolution up to UHD will bring the screen to life, whilst the new modern design ensures a forward-thinking look.

Education

Made for the long run with rigorous material testing, energy saving output and a built-in satellite tuner for no-mess reception where available.



Features

 **4K ULTRAHD**

 **USB Cloning**

 **Welcome Page**

 **Prison Mode**

 **Multi Remote**

Bedside TV

Advanced connectivity

Comfort patients during their time of need with the new Philips Bedside TV. Designed for healthcare environments, this medical-grade 19-inch display delivers advanced connectivity, a customisable interface, and AntiMicrobial housing for superior patient protection.

19"

Healthcare

An AntiMicrobial case minimizes the spread of germs and allows for easy cleaning, whilst nurse-call system compatibility provides convenient access to help in medical emergencies.



CMND

enables instant patient information updates, and Chromecast built-in helps keep a comfortable setting by allowing patients to cast content from their mobile devices.

Galvanic isolation

ensures a fail-safe separation of the headphone connector from the electrical environment near the patient's bed.

Reading light

Give them the freedom to read, day or night.

A Reading light is conveniently placed under the bottom bezel of this Philips Professional Healthcare TV. The light is operated by a button on the front touch-control panel: the button illuminates when a finger or hand is near it.



Features



Powered by **Android™**



CMND
Create | Control | Check-In



Chromecast™
built-in



AntiMicrobial



GalvanicIsolation



Reading Light



Analytics on-board



Hydrophobic Glass



MyChoice



heartit^4



Nurse call system
Compatible



SmartInfo



IntegratedSystem



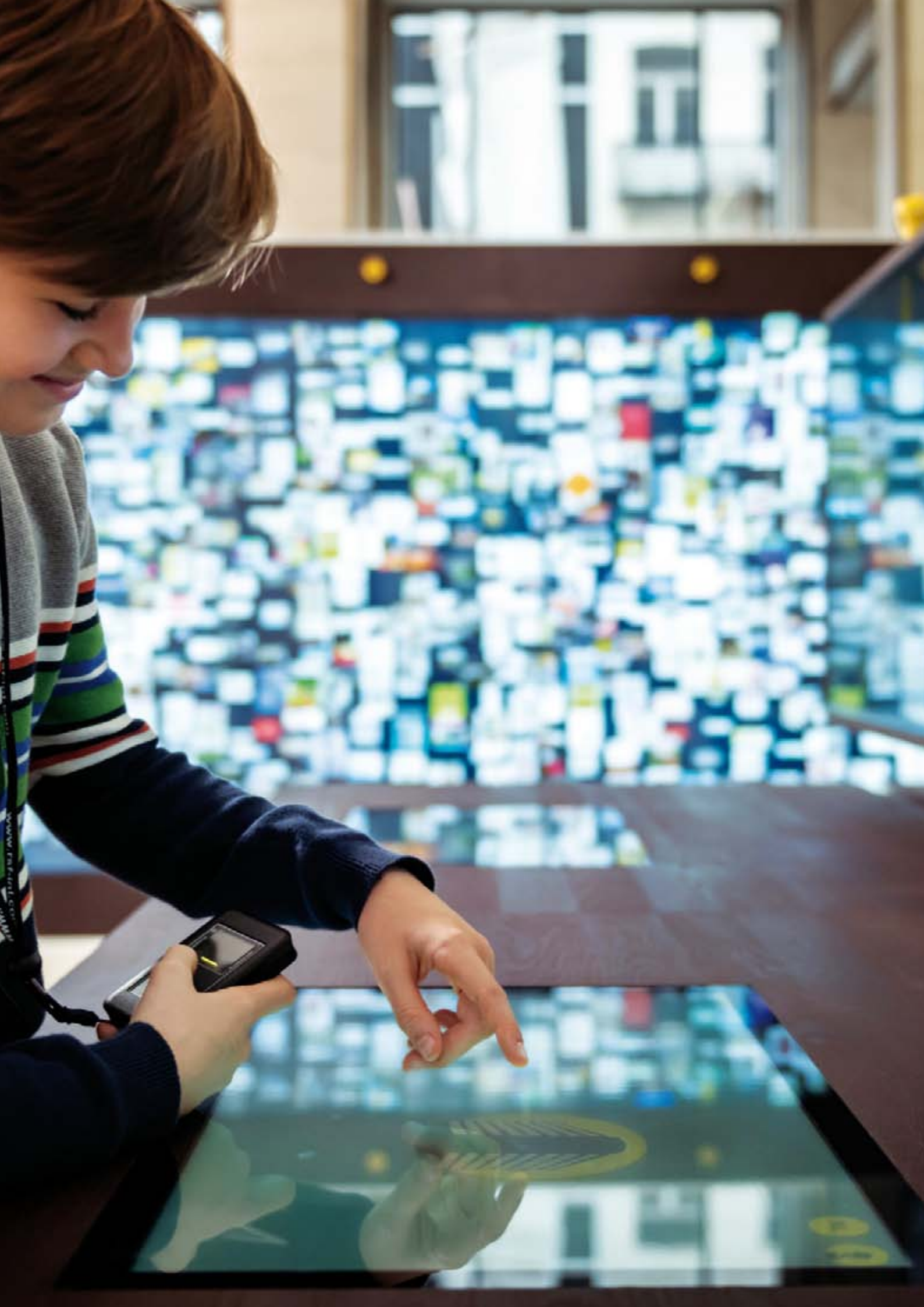
AppControl



IPTVChannels



Clever cleaning





Ready to work **with you**

For more information about Philips Signage Solutions and Professionals TVs, please contact your local sales representative or visit our website:
philips.com/professionaldisplaysolutions



© 2020 Koninklijke Philips N.V. All rights reserved.

Specifications are subject to change without notice. Trademarks are the property of Koninklijke Philips N.V. (Royal Philips) or their respective owners.

philips.com/professionaldisplaysolutions